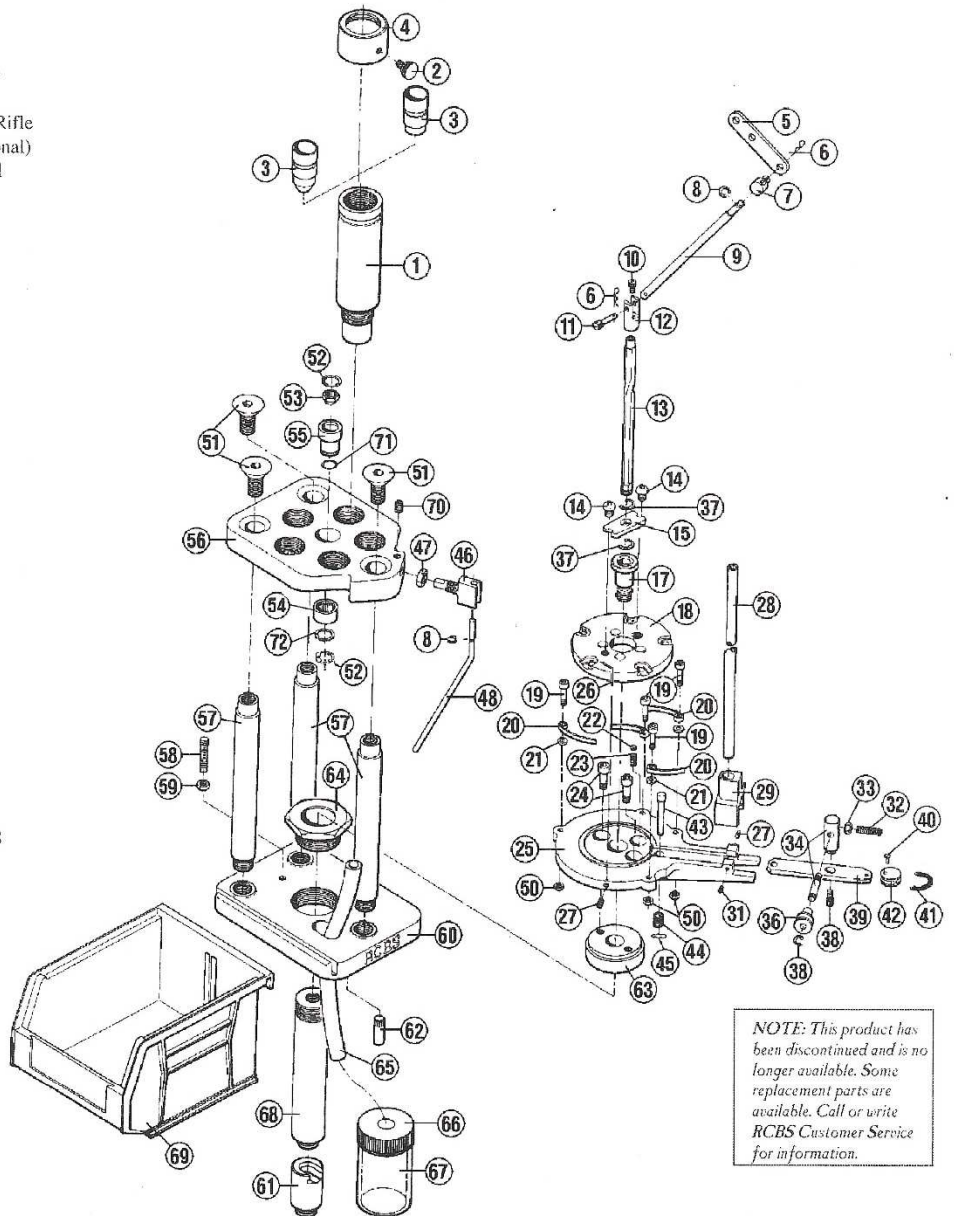


RICARICA – RICAMBI RCBS

87805 PIGGYBACK

Key	Part #	Description
1	88030	Powder Measure Adaptor
2	88052	Collar Lock Screw
3	87191	Powder Drop Tube, Sm. Rifle
3	87194	17 Cal. Drop Tube (Optional)
3	87193	Powder Drop Tube, Pistol
4	88050	Quick-Change Collar
5	87677	Cylinder Handle
6	09599	Cotter Pin
7	87679	Connecting Yoke
8	87670	Retaining Ring
9	88029	Connecting Rod
10	87680	Capscrew 8-32 x 1/4
11	87678	Cross Pin
12	87676	Connecting Yoke
13	88010	Index Rod
14	88270	Capscrew 6-32 x 1/4
15	88003	Connecting Plate
17	88009	Ram Shoulder Bolt
18	*	Shell Plate
19	98964	Capscrew
20	88039	Case Retaining Spring
21	88040	Washer
22	87152	Index Ball
23	88037	Index Ball Spring
24	87159	Capscrew 1/4 - 28 x 3/4
25	88000	Shell Plate Holder
26	88038	Case Eject Spring
27	88043	Setscrew 4-40 x 1/4
28	09581	Primer Tube, Large
28	09582	Primer Tube, Sm.
29	88045	Primer Dispenser, L.g.
29	88044	Primer Dispenser, Sm.
31	88036	Flathead Screw 4-40 x 1/8
32	88034	Setscrew 8-32 x 3/4
33	88035	Hex Nut 8-32
34	88062	Roller Carrier Assembly
36	88020	Roller
37	87657	Retaining Ring
38	87687	Capscrew 10-32 x 1/4
39	88016	Transfer Bar, Large
39	88015	Transfer Bar, Small
40	88018	Spring Retainer Rivet
41	88019	Return Spring
42	88017	Spring Retainer
43	88013	Primer Plug, Large
43	88012	Primer Plug, Small
44	88014	Primer Plug Spring
45	88042	Hairpin Clip
46	88026	Cam Wire Clip
47	88027	Hex Nut 3/8 - 24
48	88060	Cam Wire Assembly
50	87157	Hex Nut 6-32
51	88032	FHSS, 3/8 - 16 x 3/4
52	09143	Retaining Ring
53	87650	Nylon Bushing
54	87653	Clutch Bearing
55	87651	Inner Race
56	88001	Top Plate
57	88008	Support Rod
58	88033	Setscrew 1/4 - 28 x 1 1/4
59	87175	Hex Nut 1/4 - 28
60	88002	Bottom Plate
61	88004	Ram Adaptor
62	88011	Rock Chucker Locating Pin



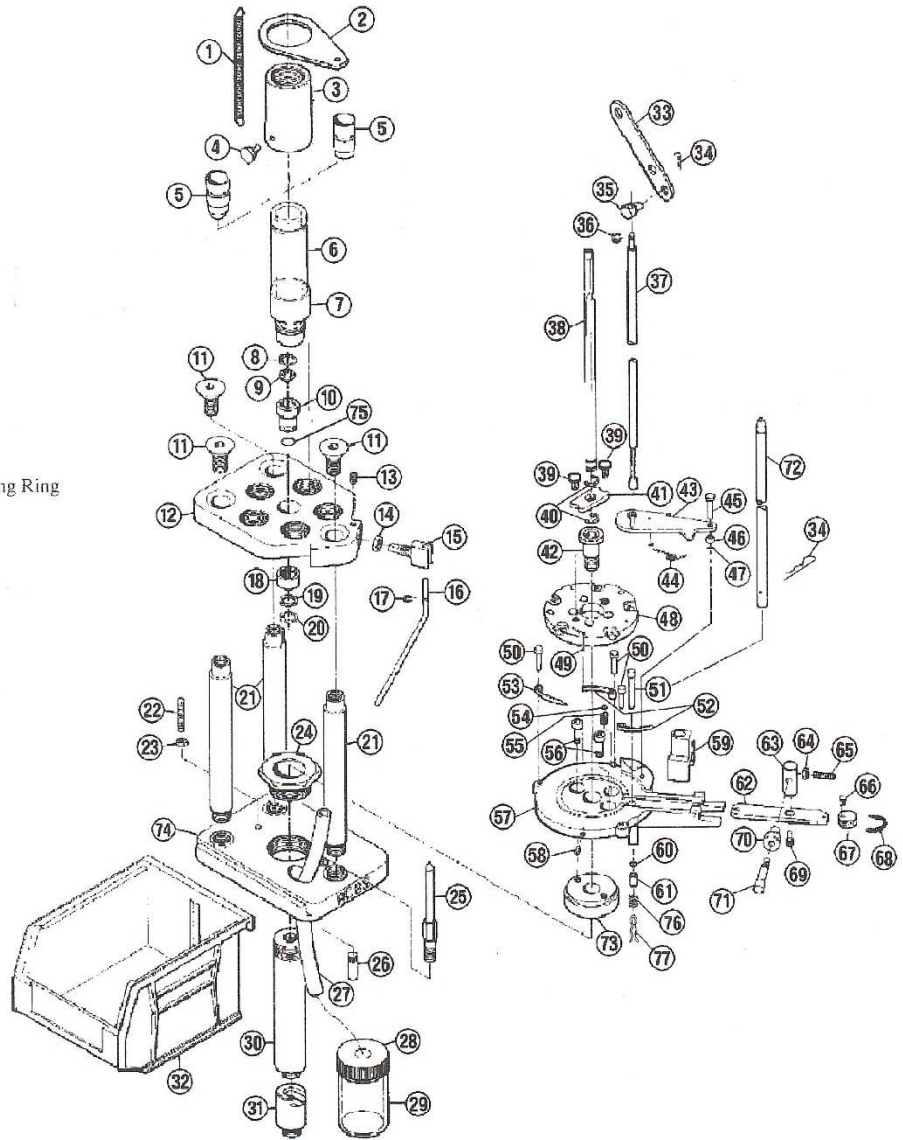
Key	Part #	Description
63	88006	Shell Plate Holder Adaptor
64	88007	Piggyback Lock Nut
65	88028	Spent Primer Tube
66	87178	Spent Primer Bottle Cap
67	87177	Spent Primer Bottle
68	88005	Upper Ram
69	88031	Ammo Catcher Box
70	09099	Setscrew 10-32x1/4
71	87652	Wave Washer
72	87658	Clutch Bearing Washer
◆	88063	Shell Plate Holder Assembly
◆	88064	Top Plate Assembly
◆	88065	Primer Transfer Roller Assembly
◆	88048	Primer Follower

Key	Part #	Description
◆	88049	Lock Nut/Die Wrench
◆	87501	Hex Lock Ring Assembly, 7/8 - 14
◆	88051	Hex Key Wrench, .050
◆	09534	Hex Key Wrench, 5/64
◆	09635	Hex Key Wrench, 3/32
◆	86794	Hex Key Wrench, 1/8
◆	81150	Hex Key Wrench, 5/32
◆	86795	Hex Key Wrench, 9/64
◆	86796	Hex Key Wrench, 5/16
◆	88055	Hex Speed Wrench, 5/16
◆	86857	Rock Chucker Piggyback Handle Assembly (Optional)

◆ Not shown.
* See current Shooters Catalog for this item.

87807 PIGGYBACK II

Key	Part #	Description
1	88753	Powder Measure Return Spring
2	88757	Return Spring Tab
3	88724	Quick Change Collar
4	88052	Collar Lock Screw
5	88736	Powder Drop Tube, Small Rifle
5	88784	.17 Cal. Drop Tube
5	88795	Powder Drop Tube, Pistol
6	88794	Powder Measure Adaptor Tube
7	88739	Powder Measure Male Adaptor
8	87654	Retaining Ring
9	87650	Nylon Index Bushing (2)
10	87651	Inner Race
11	88032	3/8-16 x 3/4 FHS
12	88001	Top Plate
13	09099	Setscrew 10-32x1/4
14	88027	Hex Nut 3/8-24
15	88026	Cam Wire Clip
16	88060	Cam Wire Assembly w/ Retaining Ring
17	87670	Retaining Ring
18	87653	Clutch Bearing
19	87658	Clutch Bearing Washer
20	09143	Retaining Ring
21	88793	Support Rod (3)
22	88033	Setscrew 1/4-28x1 1/4
23	87175	Hex Nut 1/4- 28
24	88007	Piggyback Lock Nut
25	88718	Index Locating Pin
26	88011	Rock Chucker Locating Pin
27	88028	Spent Primer Tube
28	87178	Spent Primer Bottle Cap
29	87177	Spent Primer Bottle
30	88005	Upper Ram
31	88004	Ram Adaptor
32	88031	Ammo Catcher Box
33	87677	Cylinder Handle
34	09599	Cotter Pin
35	87679	Connecting Yoke
36	87670	Retaining Ring
37	88792	Case Detection Push Rod
38	88785	Index Rod
39	88720	Knurled Screw 8-32 (2)
40	87657	Retaining Ring (2)
41	88003	Connecting Plate
42	88009	Shoulder Bolt
43	88726	Case Detection Arm
44	88729	Case Detection Spring
45	88048	Primer Follower
46	88049	Lock Nut / Die Wrench
47	87501	Hex Lock Ring Assembly, 7/8-14 (3)
48	88051	Hex Key Wrench, .050
49	88775	Case Detection Arm Pin
50	88776	Detection Arm Pin Sleeve
51	88043	Screw 4-40 x 1/4
52	*	Five Station Shell Plate *
53	88038	Case Eject Spring
54	88717	Case Retaining Spring Plug (3)
55	7-88797	Primer Plug, Large
56	7-88796	Primer Plug, Small
57	88751	Station 2 & 4 Case Retaining Spring
58	88752	Station 5 Case Retaining Spring
59	87152	Index Ball
60	88037	Index Ball Spring
61	88790	Cap Screw 1/4-28x1/2 (2)
62	88786	Shell Plate Holder
63	09509	Setscrew 8-32x1/4



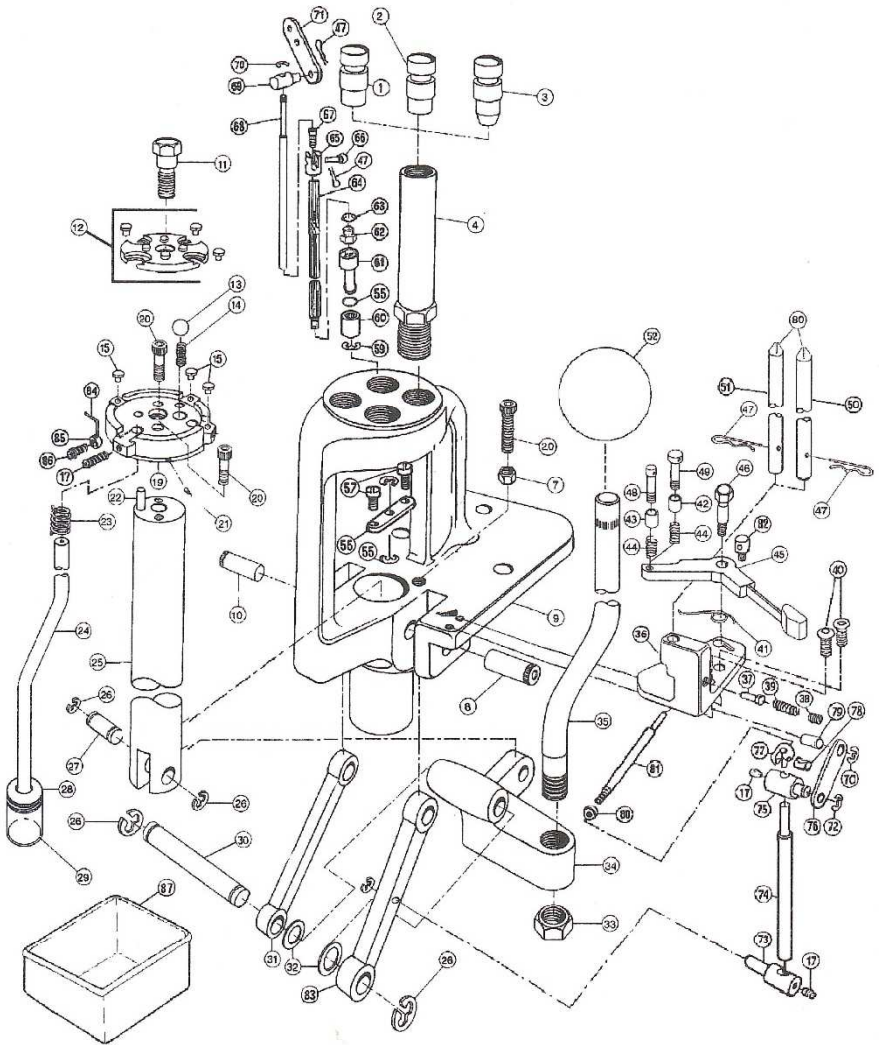
Key	Part #	Description
59	88044	Primer Dispenser, Small
59	88045	Primer Dispenser, Large
60	7-88696	Primer Bushing
61	7-88697	Primer Boss
62	88015	Transfer Bar, Small
62	88016	Transfer Bar, Large
63	88021	Roller Carrier (2)
64	88035	Hex Nut 8-32 (2)
65	88034	SHSS 8-32 3/4 X 1/4
66	88018	Spring Retainer Rivet (2)
67	88017	Spring Retainer (2)
68	88019	Return Spring
69	87687	Cap Screw 10-32 x 1/4 (2)
70	88020	Cam Rollers (2)
71	88737	Roller Pins (2)
72	09582	Primer Tube, Small
72	09581	Primer Tube, Large
73	88791	Shell Plate Holder Adaptor
74	88787	Bottom Plate

Key	Part #	Description
75	87652	Wave Washer
76	88014	Primer Plug Spring
77	88042	Primer Plug Clip
88060	88060	Cam Wire Assembly (key #'s 16 & 17)
88062	88062	Roller Carrier Assembly (key #'s 63 & 71)
88788	88788	Shell Plate Holder Assembly (key #'s 50, 51, 52, 53, & 57)
88064	88064	Top Plate Assembly (key #'s 8, 9, 10, 12, 18, 19, & 20)
88065	88065	Primer Transfer Roller Assembly (key #'s 63, 64, 65, 66, 67, 69, 70, & 71)
86857	86857	Rock Chucker Piggyback Handle Assembly (Optional)
09534	09534	Hex Key Wrench, 5/64
09635	09635	Hex Key Wrench, 3/32
86756	86756	Hex Key Wrench, 5/16
88055	88055	Hex Speed Wrench, 5/16

* Not shown.
* See current Shooters Catalog for this item.

87105 AUTO 4X4 PROGRESSIVE RELOADING PRESS

Key	Part #	Description
1	87191	Small Rifle Drop Tube
2	87192	Large Rifle Drop Tube
3	87193	Pistol Drop Tube
❖	87194	.17 Cal. Drop Tube (optional)
4	87190	Powder Measure Adaptor
7	87175	1/4" (28) Hex Nut
8	09128	Link Arm Pin, Right
9	87140	Press Frame*
10	09127	Link Arm Pin, Left
11	87691	Ram Shoulder Bolt
12	*	Shell Plate Assembly
13	87152	Index Ball 3/8"
14	87153	Index Ball Spring
15	*	Case Retaining Button (3)
19	87692	Shell Plate Holder
20	87159	1/4" (28) x 3/4" Socket Screw
21	87160	10-32 x 3/8" Brass Tipped SHSS
22	87158	3/16" x 5/8" Roll Pin
23	87167	Ram Return Spring
24	87176	Depriming Tube
25	87165	Ram
26	09105	Retaining Ring
27	87166	Ram Pin
28	87178	Depriming Bottle Cap
29	87177	Depriming Bottle
30	87146	Toggle Block Pin
31	09150	Link Arm, Left
32	09144	Bow Washer 134-5-20
33	09136	Handle Nut 5/8" (18)
34	87145	Toggle Block
35	87171	Handle Shaft
36	87695	Priming Plate
37	09595	APF Stop Pin
38	09591	Set Screw 1/4" 28 x 3/16" Cup Point
39	09596	APF Coil Spring
40	87181	Button Head Cap Screw 10/32" x 5/8"
41	87184	Priming Return Spring
42	09506	Primer Sleeve UPA, Large
43	09507	Primer Sleeve UPA, Small
44	09508	Primer Plug Coil Spring
45	87694	Priming Arm
46	87183	Priming Shoulder Bolt
47	09599	APF Colter Pin
48	09555	Primer Plug UPA, Small
49	09554	Primer Plug UPA, Large
50	09582	APF Tube, Small
51	09581	APF Tube, Large
52	09121	Handle Ball
55	87652	Wave Washer (2)
❖	86852	Ball Handle Assembly
56	87657	Retaining Ring
57	87655	Shell Plate Driver
58	87659	Pan Head Screw 8-32 x 3/16
59	09143	Retaining Ring
60	87653	Clutch
61	87651	Inner Race
62	87650	Index Bushing, Nylon
63	87654	Retaining Ring
64	87656	Index Rod
65	87676	Connector
66	87678	Cross Pin
67	87680	8-32 x 1/4 Socket Screw
68	87675	Connecting Rod
69	87679	Handle Connecting Yoke



Key	Part #	Description
70	87670	Retaining Ring
71	87677	Cylinder Handle
72	80056	Retaining Ring
73	87669	Yoke, Long
74	87668	Rod, Long
75	87667	Yoke, Short
76	87666	Connector Link
77	87660	Connector 10-32
78	87663	Swivel
79	87665	Link Pin

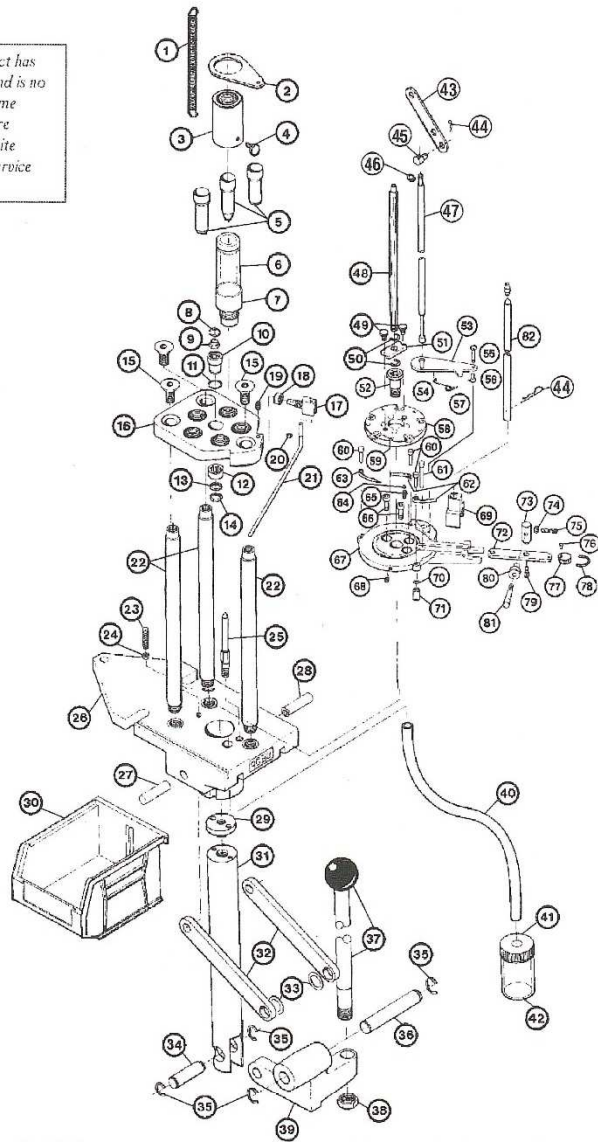
Key	Part #	Description
80	09603	Hex Nut 10 x 32
81	87662	Push Rod
82	87664	Connector
83	87693	Link Arm, Right
84	87686	Case Ejector Spring
85	87685	Wire Clamp
86	81109	Socket Screw 10-32
87	86625	Ammo Catcher Box

❖ Not shown
 * See current Shooters Catalog for this item
 ❖ Not available separately

88704 AMMOMASTER AUTO I

Key	Part #	Description
1	88753	Powder Measure Return Spring
2	88757	Return Spring Tab
3	88724	Quick Change Collar
4	88052	Collar Lock Screw
5	88736	Small Rifle Drop Tube
5	88784	17 Cal. Drop Tube (optional)
5	88735	Large Rifle Drop Tube
5	88734	Pistol Drop Tube
6	88723	Powder Measure Adaptor Tube
7	88739	Powder Measure Male Adaptor
8	87654	Retaining Ring
9	87650	Nylon Index Bushing (2)
10	87651	Inner Race
11	87652	Wave Washer
12	87653	Clutch Bearing
13	87658	Roller Clutch Washer
14	09143	Retaining Ring
15	88032	3/8 - 16x3/4 FHSS (3)
16	88001	Top Plate
17	88026	Cam Wire Clip
18	88027	3/8 - 24 Hex Nut
19	09099	10 - 32 x 1/4 Setscrew
20	87670	Retaining Ring
21	88725	Cam
22	88722	Support Rod (3)
23	88033	1/4 - 28 x 1/4 Setscrew
24	87175	1/4 - 28 Lock Nut
25	88718	Index Locating Pin
26	88710	Base
27	09127	Link Pin, Left
28	09128	Link Pin, Right
29	88716	Shell Plate Holder Adaptor
30	88031	Ammo Catcher Box
31	88714	Ram
32	88719	Linkage Arms (2)
33	09144	Bow Washer (2)
34	87166	Ram Pin
35	09105	1/2 Retaining Ring (4)
36	88712	Toggle Block Pin
37	86857	Handle
38	09136	Handle Lock Nut
39	88711	Toggle Block
40	88733	Spent Primer Tube
41	87178	Spent Primer Bottle Cap
42	87177	Spent Primer Bottle
43	87677	Cylinder Handle
44	09599	Cotter Pin (2)
45	87679	Connecting Yoke
46	87670	Retaining Ring
47	88727	Case Detection Push Rod
48	88721	Index Rod
49	88720	8 - 32 Knurled Screw (2)
50	87657	Retaining Ring (2)
51	88003	Connecting Plate
52	88009	Shoulder Bolt
53	88726	Case Detection Arm
54	88729	Case Detect Spring
55	88775	Case Detect Arm Pin
56	88776	Detection Arm Pin Sleeve
57	88043	4 x 40 x 1/4 Screw
58	*	Five Station Shell Plate
59	88038	Case Eject Spring

NOTE: This product has been discontinued and is no longer available. Some replacement parts are available. Call or write RCBS Customer Service for information.











Key	Part #	Description
60	88717	Case Retaining Spring Plug (3)
61	88013	Primer Plug, Large
61	88012	Primer Plug, Small
62	88751	Station 2 & 4 Case Retaining Spring
63	88752	Station 5 Case Retaining Spring
64	87152	Index Ball
65	88037	Index Ball Spring
66	87159	1/4 - 28 x 3/4 Cap Screw (2)
67	88786	Shell Plate Holder
68	09509	8-32 x 1/4 Setscrew
69	88044	Primer Dispenser, Small
69	88045	Primer Dispenser, Large
70	88014	Primer Plug Spring
71	88042	Primer Plug Clip
72	88015	Transfer Bar, Small
72	88016	Transfer Bar, Large
73	88021	Roller Carrier (2)
74	88035	8 - Hex Nut (2)
75	88034	8 - 32 x 3/4 SHSS

Key	Part #	Description
76	88018	Spring Retainer Rivet (2)
77	88017	Spring Retainer (2)
78	88019	Return Spring
79	87687	10 - 32 x 1/4 Cap Screw (2)
80	88020	Cam Rollers (2)
81	88737	Roller Pins (2)
82	09582	Primer Tube, Small
82	09581	Primer Tube, Large
◆	88048	Primer Follower
◆	87501	Hex Lock Rings
◆	88051	Hex Key Wrench .050
◆	09534	Hex Key Wrench 5/64
◆	09635	Hex Key Wrench 3/32
◆	86796	Hex Key Wrench 5/16
◆	88741	Star Wheel
◆	88758	Ram Return Spring
◆	788773	Parts Kit

◆ Not shown.
* See current Shooters Catalog for this item.


RICAMBI per presse RCBS

09509	Setscrew 8-32 x 1/4	Vite Compatibile con:	Piggyback II: n° 58 AmmoMaster Auto I e II: n° 68		€ 3,00 Usato
09552	Primer Plug Sleeve and Spring, Large	Kit comprensivo di pistoncino innescatore misura large, coppetta reggi innesco e molla, per presse Partner, Reloader Special 5, Rock Chucker e Rock Chucker II			€ 9,00
09594	Automatic Primer Feed Body	Alimentatore di inneschi per le presse Rock Chucker II, Reloader Special e JR, da utilizzare con gli appositi tubi (non compresi)			€ 22,00
09599	Automatic Primer Feed Cotter Pin	Coppiglia di fermo, viene inserita nel foro del tubo di alimentazione degli inneschi per bloccarli all'interno durante il caricamento e il trasporto del tubo			€ 5,50
09601	Socketed Head Screw 6-32 x 9/16	Vite			€ 4,00
87152	Index Ball	Sfera Compatibile con:	Piggyback: n° 22 Piggyback II: n° 54 Auto 4x4: n° 13 AmmoMaster Auto I e II: 64		€ 4,00 Usato
87157	Hex Nut 1/4-28	Dado Compatibile con:	Piggyback: n° 50 Auto 4x4: n° 18		€ 9,00 € 4,00 Usato
87159	Capscrew 1/4-28 x 3/4	Vite Compatibile con:	Piggyback: n° 24 Auto 4x4: n° 20 AmmoMaster Auto I e II: 66 AmmoMaster: n° 9		€ 3,00 Usato
87175	Hex Nut 6-32	Dado Compatibile con:	Piggyback: n° 59 Auto 4x4: n° 7 AmmoMaster Auto I e II: n° 24		€ 3,00 Usato
87182	Primer Arm	Compatibile con:	Auto 4x4: n° 45		€ 14,00
87694	Primer Arm Shoulder Bolt	Compatibile con:	Auto 4x4: n° 46		€ 10,00
87191	Powder Drop Tube Small Rifle	Compatibile con:	Piggyback: n° 3 Auto 4x4: n° 1		€ 17,00
87601	4x4 Shell Plate	Piatto porta-bossoli per presse 4x4	#01		€ 49,00
87604			#04		€ 49,00
87606			#06		€ 49,00
87654	Retaining Ring	Compatibile con:	Piggyback II: n° 8 Auto 4x4: n° 63 AmmoMaster Auto I e II: n° 8		€ 8,50
87655	Shell Plate Driver	Compatibile con:	Auto 4x4: n° 57		€ 9,00
87656	Indexing Rod	Compatibile con:	Auto 4x4: n° 64		€ 12,00
87657	Retaining Ring	Coppiglia Compatibile con:	Piggyback: n° 38 Piggyback II: n° 40 Auto 4x4: n° 56 AmmoMaster Auto I e II: n° 50		€ 9,00 € 4,00 Usato
87662	Primer Feed Push Rod	Compatibile con:	Auto 4x4: n° 81		€ 9,00
87668	Primer Rod Long	Compatibile con:	Auto 4x4: n° 74		€ 9,00
87670	Retaining Ring	Coppiglia Compatibile con:	Partner: n° 20 Reloader Special 5: n° 16 Piggyback: n° 8 Piggyback II: n° 17 e 36 Auto 4x4: n° 70 AmmoMaster Auto I: n° 46 AmmoMaster Auto II: n° 20 e 46		€ 9,00
87676	Connecting Yoke	Compatibile con:	Piggyback: n° 12 Auto 4x4: n° 65		€ 9,00
87678	Cross Pin	Compatibile con:	Piggyback: n° 11 Auto 4x4: n° 66		€ 9,00

87679	Handle Connecting Yoke	Compatibile con:	Piggyback: n° 7 Piggyback II: n° 35 Auto 4x4: n° 69 AmmoMaster Auto I e II: n° 75	€ 9,00
87680	Capscrew 8-32 x 1/4	Vite Compatibile con:	Piggyback: n° 10 Auto 4x4: n° 67	€ 9,00
87687	Capscrew 10-32 x 1/4	Vite Compatibile con:	Piggyback: n° 38 Piggyback II: n° 69 AmmoMaster Auto I e II: n° 79	€ 3,00 Usato
87694 (ex 87182)	Primer Arm	Compatibile con:	Auto 4x4: n° 45	€ 14,00
87695	Priming Plate	Compatibile con:	Auto 4x4: n° 36	€ 29,50
88000	Shall Plate Holder	Porta-shell holder Compatibile con:	Piggyback: n° 25	€ 29,00 Usato
88002	Bottom Plate	Piastra inferiore Compatibile con:	Piggyback: n° 60+62	€ 15,00 Usato
88004	Ram Adaptor	Adattatore pistone Compatibile con:	Piggyback: n° 61 Piggyback II: n° 31	€ 15,00 Usato
88005	Upper Ram	Pistone Compatibile con:	Piggyback: n° 68 Piggyback II: n° 30	€ 6,00 Usato
88006	Shell Plate Holder Adaptor	Ghiera Compatibile con:	Piggyback: n° 63	€ 6,00 Usato
88007	Piggyback Lock Nut	Dado Compatibile con:	Piggyback: n° 64 Piggyback II: n° 24	€ 8,00 Usato
88008	Support Rod	Compatibile con:	Piggyback: n° 57	€ 6,00 Usato
88009	Ram Shoulder Bolt	Compatibile con:	Piggyback: n° 17 Piggyback II: n° 42 AmmoMaster Auto I e II: n° 52	€ 8,00 Usato ESAURITO
88014	Primer Plug Spring Coil Spring	Molla Compatibile con:	Piggyback: n° 44 Piggyback II: n° 76 AmmoMaster Auto I: n° 70 AmmoMaster Auto II: n° 83	€ 9,00
88012	Primer Plug, Small	Spingi-innesco Compatibile con:	Piggyback: n° 43 AmmoMaster Auto I: n° 61	€ 4,00 Usato
88015	Transfer Bar, Small	Slitta innescatore Compatibile con:	Piggyback: n° 39 Piggyback II: n° 62	€ 5,00 Usato
88016	Transfer Bar, Large		AmmoMaster Auto I e II: n° 72	€ 5,00 Usato
88017	Spring Retainer	Fermo molla Compatibile con:	Piggyback: n° 42 Piggyback II: n° 67 AmmoMaster Auto I e II: n° 77	€ 9,00 € 5,00 Usato
88018	Spring Retainer Pin	Spina Compatibile con:	Piggyback: n°40 Piggyback II: n° 66 AmmoMaster Auto I e II: n° 76	€ 9,00
88019	Return Spring	Molla Compatibile con:	Piggyback: n° 41 Piggyback II: n° 68 AmmoMaster Auto I e II: n° 78	€ 1,00 Usato
88020	Roller	Rotella Compatibile con:	Piggyback: n° 36 Piggyback II: n° 70 AmmoMaster Auto I e II: n° 80	€ 4,00 Usato
88026	Cam Wire Clip	Compatibile con:	Piggyback: n° 46 Piggyback II: n° 15 AmmoMaster Auto I e II: n° 17	€ 3,00 Usato
88027	Hex Nut 3/8-24	Dado Compatibile con:	Piggyback: n° 47 Piggyback II: n° 14 AmmoMaster Auto I e II: n° 18	€ 4,00 Usato
88032	FHSS 3/8-16 x 3/4	Vite Compatibile con:	Piggyback: n° 51 Piggyback II: n° 11 AmmoMaster Auto I e II: n° 15	€ 5,00 Usato

88033	Setscrew 1/4-28 x 1 1/4	Vite Compatibile con:	Piggyback: n° 58 Piggyback II: n° 22 AmmoMaster Auto I e II: n° 23	€ 3,00 Usato
88034	Setscrew 8-32 x 3/4	Vite Compatibile con:	Piggyback: n° 32 Piggyback II: n° 65 AmmoMaster Auto I e II: n° 75	€ 3,00 Usato
88035	Hex Nut 8-32	Dado Compatibile con:	Piggyback: n° 33 Piggyback II: n° 64 AmmoMaster Auto I e II: n° 74	€ 3,00 Usato
88036	Flathead Screw 4-40 x 1/8	Vite Compatibile con:	Piggyback: n°31	€ 4,00
88037	Index Ball Spring	Molla sfera Compatibile con:	Piggyback: n° 23 Piggyback II: n° 55 AmmoMaster Auto I e II: n° 65	€ 4,00
88038	Case Eject Spring	Espulsore bossolo Compatibile con:	Piggyback: n° 26 Piggyback II: n° 49 AmmoMaster Auto I e II: n° 59	€ 4,00 Usato
88039	Case Retaining Spring	Molla di ritegno del bossolo Compatibile con:	Piggyback: n° 20	€ 9,00 € 5,00 Usato
88040	Washer	Rondella Compatibile con:	Piggyback: n° 21	€ 4,00 Usato
88042	Hairpin Clip	Coppiglia Compatibile con:	Piggyback: n° 45 Piggyback II: n° 77 AmmoMaster Auto I: n° 71 AmmoMaster Auto II: n° 84	€ 9,00
88043	Setscrew 4-40 x 1/4	Grano Compatibile con:	Piggyback: n° 27 Piggyback II: n° 47 AmmoMaster Auto I e II: n° 57	€ 3,00 Usato
88044	Primer Dispenser, Small	Compatibile con:	Piggyback: n° 29 Piggyback II: n° 59 AmmoMaster Auto I e II: n° 69	€ 9,00
88045	Primer Dispenser, Large	Compatibile con:	Piggyback: n° 29 Piggyback II: n° 59 AmmoMaster Auto I e II: n° 69	€ 9,00
88060	Cam Wire Assembly	Compatibile con:	Piggyback: n° 48+8 Piggyback II: n° 16+17	€ 4,00 Usato
88062	Roller Carrier Assembly	Supporto rotella Compatibile con:	Piggyback: n° 34 Piggyback II: n° 63+71	€ 4,00 Usato
88717	Case Retaining Spring Plug	Perno Compatibile con:	Piggyback II: n° 50 AmmoMaster Auto I e II: n° 60	€ 4,00 Usato
88718	Index Locating Pin	Compatibile con:	Piggyback II: n° 25 AmmoMaster Auto I e II: n° 25	€ 6,00 Usato
88720	Knurled Screw 8-32	Vite Compatibile con:	Piggyback II: n° 39 AmmoMaster Auto I e II: n° 49	€ 5,00 Usato
88729	Case Detection Spring	Molla Compatibile con:	Piggyback II: n° 44 AmmoMaster Auto I e II: n° 54	€ 4,00
88751	Station 2 & 4 Case Retaining Spring	Molla ferma-bossolo Compatibile con:	Piggyback II: n° 52 AmmoMaster Auto I e II: n° 62	€ 4,00 Usato
88752	Station 5 Case Retaining Spring	Molla ferma-bossolo Compatibile con:	Piggyback II: n° 53 AmmoMaster Auto I e II: n° 63	€ 4,00 Usato
88786	Shell Plate Holder	Porta-shell holder Compatibile con:	Piggyback II: n° 57 AmmoMaster Auto I e II: n° 67	€ 29,00 Usato
88787	Bottom Plate	Piastra inferiore Compatibile con:	Piggyback II: n° 74+26	€ 15,00 Usato
88790	Capscrew 1/4-28 x 1/2	Vite Compatibile con:	Piggyback II: n° 56	€ 3,00 Usato
88791	Shell Plate Holder Adaptor	Ghiera Compatibile con:	Piggyback II: n° 73	€ 6,00 Usato
88793	Support Rod	Compatibile con:	Piggyback II: n° 21	€ 6,00 Usato
88794	Powder Measure Adaptor Tube	Adattatore dosatore Compatibile con:	Piggyback II: n° 6	€ 22,00



88803			#03		€ 25,00 Usato
88806			#06		€ 25,00 Usato
88808		Piatto porta-bossoli per presse progressive a 5 stazioni (AmmoMaster Auto, Piggyback, Pro 2000, Pro 2000 Auto	#08		€ 49,00
88816	5-Station Shell Plate		#16		€ 25,00 Usato
88823			#23		€ 49,00
88827			#27		€ 49,00
98964	Capscrew 6-32 x 5/8	Vite Compatibile con:	Piggyback II: n° 19		€ 4,00 Usato